

CENTURY®

1150, 1150R, & 1150RXP

After over 2 years of extensive research, design, and testing, Century is proud to introduce the 1150, a 50 ton rotator ideal for heavy recovery with a weight saving design for your daily towing. Features include:

- Dual 50,000 lb. Planetary 2-Speed Winches
- 360 Degrees of Continuous Boom Rotation
- 3-Stage Recovery Boom
- Numerous Outrigger and Underlift Options
- Optional Deck and Turret Mounted Winches



Standard Underlift Features

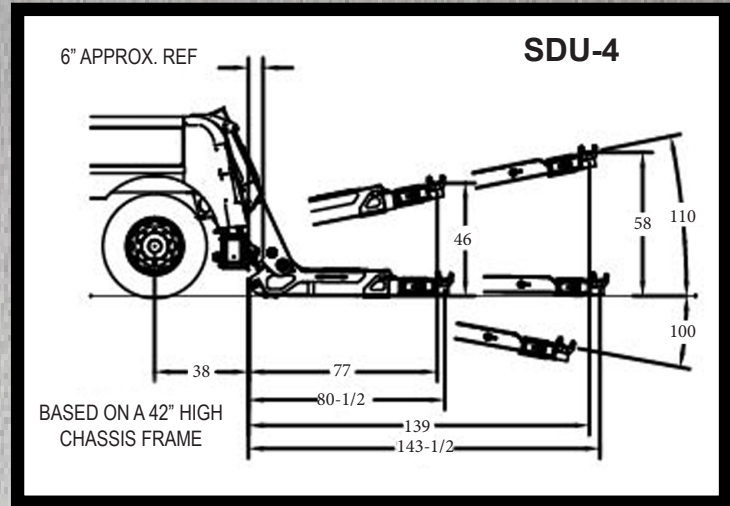
- Power Elevation
- Power Extension
- Power Tilt
- Hydraulic Fold
- 3-Stage Design
- 2 Piece Pivot Pin
- Upper/Lower Thrust Washer
- Low Profile Heavy Duty Crossbar
- 70° Pivoting Crossbar
- Low Profile Fork Holders
- 9 Pairs of Cast Steel Forks
- 1 Pair of Spring Lift Adapters
- Safety Chains in Tailboard

Optional Features

- Coach or Street Low Rider Underlift
- Front Outrigger Side Pull Attachment
- Chain Package
- Endless Loop Sling Package
- Alloy Foundry Hooks
- Alloy Shackles
- Alloy Snatch Blocks
- Spreader Bar
- Rotator D-Ring Package
- Dual Rear Cameras & Monitor
- Air Shift PTO
- 24", 30", 36" 48" Saddle Tunnel Box
- Convenience Group (Rails & Steps)
- Pintle Hook Attachment
- 5th Wheel Plate (Req. Pintle Hook Attachment)
- Trailer Ball Adapter (Req. Pintle Hook Attachment)
- Heavy-Duty Tire Lift
- XHD Tire Lift (25k Capacity)
- Offset Fork Holder Extensions
- Fork Riser Brackets
- Chain Hook Slide Adapter
- Additional Lift Forks
- Chain Rack Carousel
- Stainless Steel Fenderettes
- Front Mounted 3 Stage H-Beam Outriggers - 262" stance (Std. 1150R/Not Available RXP)
- Front Mounted 2 Stage H-Beam Outriggers - 212" stance (1150)
- Rear 4 Stage Outriggers - 220" stance
- Dual H-Beam Outriggers - 262" stance (1150, 1150R)
- Aluminum Dress-Up Kits
- Winch Bucket Mounted Aluminum Tubular Pylon
- Manual Override Control for PTO
- 3 or 4 Drawer Toolbox
- Water Tank Kit
- Light Bar
- Flasher Kit
- Boom Scene Lights
- LED Work & Hook-Up Lighting
- Wide Load Light Bar
- LED Side Lights
- LED Body Strip Lights
- Additional Lighting
- Installation

Optional Controls (1150, 1150RXP)

- MMGO (Load Sensing)
- Backlit Controls
- Radio Proportional Controls with Single Mounted Controls (includes backlit controls)
- Raptor Package (standard on 1150R)
- Right Hand Manual Controls
- Tailboard Underlift Controls



All ratings are based on structural factors only, not vehicle capacities or capabilities. Specifications shown are approximations and may vary depending on chassis selected. Miller Industries reserves the right to change or modify product and/or specifications without notice or obligation. Some equipment shown is optional.

Underlift Specifications

Underlift Specifications	Capacity Fully Extended to C.L. Forks	Capacity Fully Retracted to C.L. Forks	Underlift Tilt
SDU-4	17,000 lbs. @ 143.5"	55,000 lbs. @ 54"	10° + 10° -
SDU-4 Coach Low Rider	18,000 lbs. @ 165.5"	55,000 lbs. @ 66"	10° + 10° -

* Tire lift increases reach 12" to 16" to C.L. of tire lift arm.

Recommended Minimum* Chassis Specifications

	Front Axle (lbs)	Rear Axle (lbs)	Clear C.A. / C.B.	After Frame from Center of Rear Axle	R.B.M. (in./ lbs.)
1150	20,000	46,000	180"	40"	4,000,000
1150R	20,000	52,000	180"	40"	4,000,000
1150RXP	20,000	46,000	204"	40"	4,000,000

*All recommendations are minimums, heavier specifications may be required depending on chassis & equipment weight, always consult your local distributor or the factory for additional information.



Miller
INDUSTRIES
©2014 Miller Industries Towing Equipment

8503 Hilltop Drive
Ooltewah TN 37363
800.292.0330 423.238.4171
www.MillerInd.com

1150



Standard Features (All 1150 Models)

- Power Elevation
- 360° Continuous Boom Rotation
- Proportional 2 Stage Power Boom Extension with Counter Balance Valve
- Hydraulic Reservoir with an Oil Level Sight Gauge, Tank Drain, & Access Panel
- Nylatron Boom Slide Pads
- Holding Valves for Boom Elevation & Extension
- Dual 2-Speed Winches
- Cable Tensioners
- Winch Air Free Spool
- House Lock Window (Driver Side)
- Boom Angle Indicator
- Hydraulic Rear Outriggers with Removable Pads
- Hydraulic Front Outriggers
- Air Activated House Lock, Secures Boom for Transport in Rear or Forward Position
- House Lock Indicator
- Hydraulic Pump
- 360° Sheave Head
- Dual Control Stations
- Hydraulic Pressure Gauges (Driver Side)
- 2 D-Rings Mounted on 1st, 2nd, and 3rd Stage

RXP Stiff-Leg

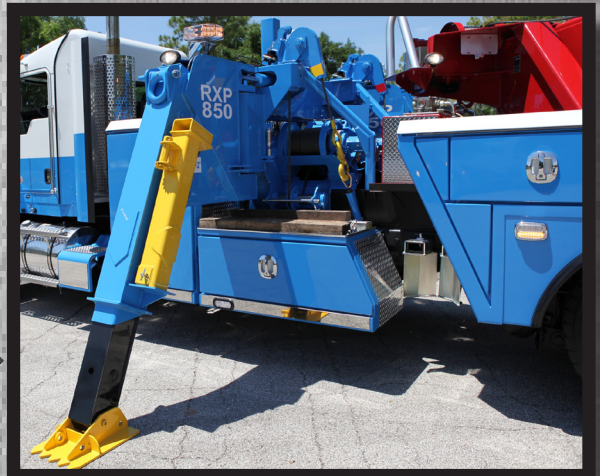
RXP Standard Features

- (2) 35,000 lb. 2 Speed Planetary Winches
- Air Free Spool (1 per Winch)
- Air Tensioner (1 per Winch)
- Directional Sheave Head (1 per Leg)
- Recovery D-Ring (1 per Leg)

Standard Body Features (All 1150 Models)

- Aluminum Modular Body
- 180" C.B.
- Large Forward Compartments
- Compartments Over the Wheel Well
- Double Panel Doors
- Door Checks
- Double Action Latches with Keys & Power Locks
- LED Federal #108 Lighting
- LED Toolbox Lighting
- Rubber Fenderettes
- Mud Flaps
- Chain Rack
- Fork Holders
- Attachment Storage
- Rubber Isolators
- Rigid Torsional Resistant Mounting Frame
- Tailboard Mounted D-Rings
- Two Rear Outrigger Spade Attachments with D-Rings
- Rear Air & Electrical Hook-Ups

The Century 1150 RXP is equipped with hydraulic stiff legs and dual 35,000 lb. 2 speed planetary winches to provide increased stability and recovery capabilities during tough side recoveries with minimal lane blockage. The increased front axle weight of Century 1150 RXP also makes it ideal for towing those heavier loads.



1150R

**1150R with 4-Stage
Rear Outriggers and
SDU-4 Underlift**



The Century 1150R with 4-stage rear outriggers and the SDU-4 underlift is available with an optional 50,000 lb. drag winch and dual 22,000 lb. turret winches for maximum power and rigging capabilities during those tough recoveries.

AUXILARY WINCH OPTIONS



Single 50,000 lb. drag winch is available on the 1150R with 4-stage rear outrigger.

- Dual 22,000 lb. Turret Mounted Winches (1150/1150R)
- Single 35,000 lb. Drag Winch (1150, 1150 RXP)
- Single 50,000 lb. Drag Winch (1150, 1150RXP, & 1150R when equipped with 4-stage rear outriggers)
- Dual 35,000 lb. Drag Winches (1150)

WINCHES

Type	Planetary 2 speed
Capacity (1st layer of drum)	50,000 lbs
Wire Rope	3/4 x 250' IWRC
Winch Free Spool	Air Operated
Cable Tensioners	Air

BOOM

Capacity (Retracted)	100,000 lbs
Capacity (Extended)	25,000 lbs
Extension	248"
Rotation	360 degrees
Maximum Angle	66 degrees
Maximum Height	495"

**1150R
with Dual H-Beam
Outriggers and HHU**



The patent pending technology on the 1150R allows the boom to travel 60 inches utilizing a self cleaning roller system that requires minimal lubrication. The 1150R has been tested in harsh environments from extreme heat to heavy ice and snow with the proven ability to start and stop under heavy loads. For maximum stability, the 1150R can be ordered with the dual "H" beam outrigger system and HHU underlift.

RAPTOR PACKAGE



Raptor Remote

The patent pending Raptor Control Package is standard on the Century 1150R and optional on other rotator models. The operator can easily maneuver through operations at the unit control station or on the wireless remote. Joystick controllers operate boom and winch functions and a display screen offers a variety of information including load sensing and boom positions.



Raptor Control Station